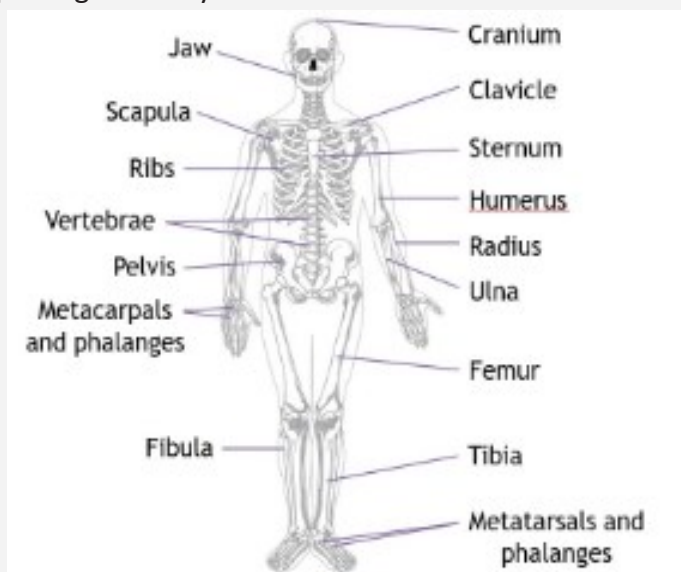


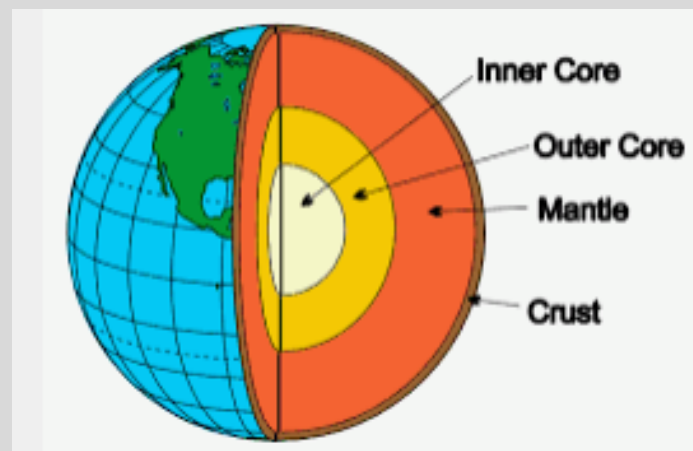
## (1) Biology—The Skeletal System

The function of the skeleton:

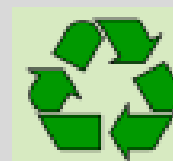
- Protection of internal organs.
- Working with muscles to provide movement.
- Creating blood cells.
- Supporting the body.



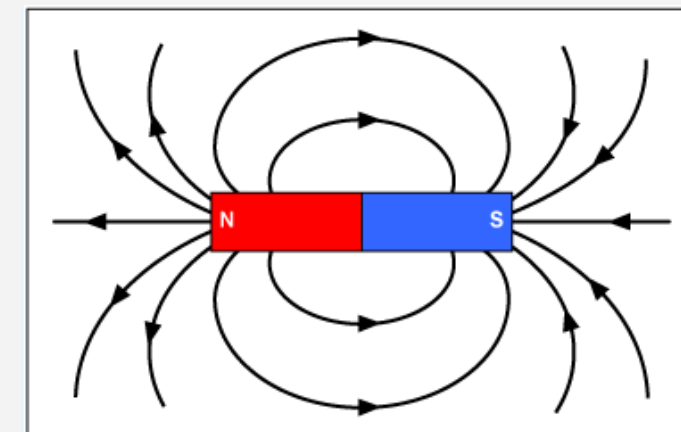
## (2) Chemistry— The Structure of the Earth



- The Earth provides us with resources such as metal, paper and fossil fuels. Lots of these resources are limited.
- Therefore we need to recycle as much as we can. If a material can be recycled it shows the recycling symbol.
- The three arrows represent: reduce, reuse, recycle.



## (3) Physics—Magnetism



**Magnetic field**—The area around a magnet where it has a magnetic effect.

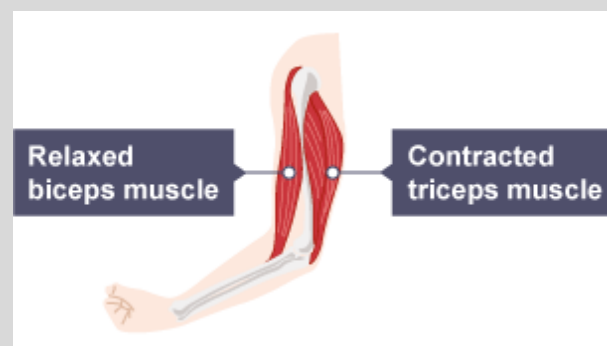
The three **magnetic elements** are: Iron, Nickel, Cobalt.

## (4) Biology— Key Vocabulary

**Joint**—Found between bones.

**Tendon**—Joins muscles to bones.

**Antagonistic muscles**—A pair of muscles that work together to allow movement.



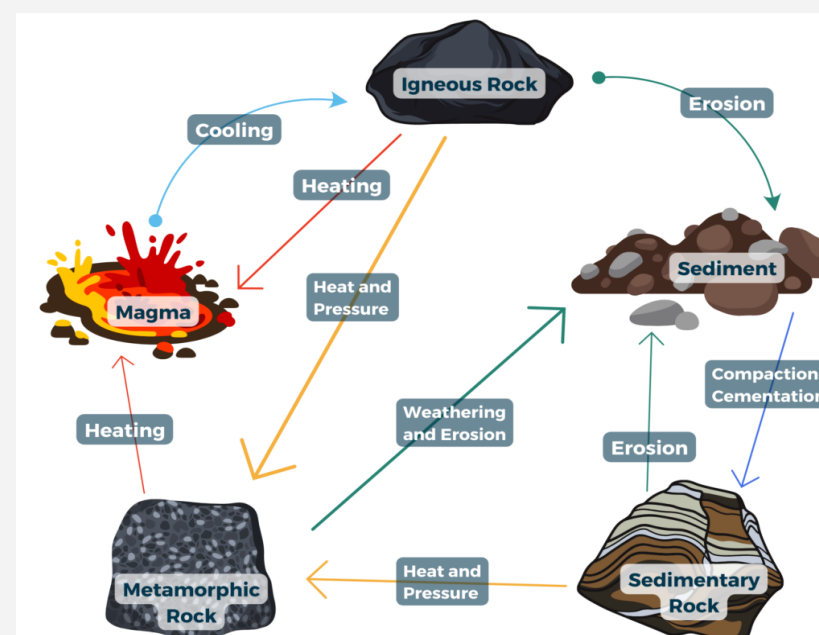
**Stem**—Part of the plant that provides support.

## (4) Chemistry—Types of Rock

**Igneous Rock**—Formed from molten rock called magma that has cooled and solidified. Contains crystals. E.g. Granite.

**Sedimentary Rock**—Formed from sediments (broken rocks) that have been compressed over time into layers. Often contains fossils. E.g. Limestone.

**Metamorphic Rock**—Formed through changes to other rocks due to heat and pressure. E.g. Marble.



## (6) Physics—The Earth & Space

**Sun**—A star in the centre of our solar system.

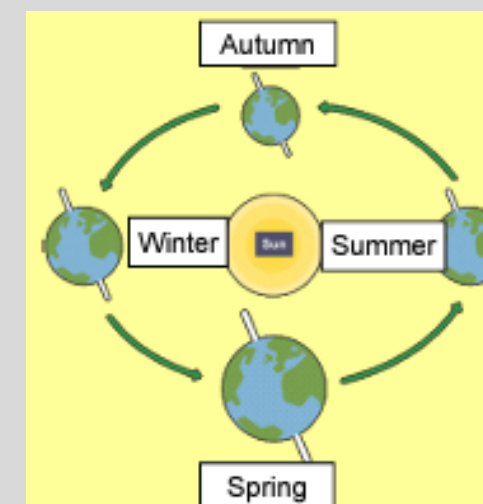
**Galaxy**—A collection of stars in space e.g. The Milky Way, Andromeda, Sombrero.

**Light year**—The distance light travels in one year.

**Axis**—The tilt of the Earth.

**Orbit**—The path an object takes when it travels around another object such as a planet or star.

- Summer and Spring—The Earth is tilted towards the Sun.
- Autumn and Winter—The Earth is tilted away from the Sun.



**Trinity TV**

For more help, visit Trinity TV and watch the following videos:

Trinity TV > Year > Subject